



Application for Overhead Pole and Wire Occupancy

Office of Air, Rail and Transit—Railroads
 South Dakota Department of Transportation
 700 E. Broadway Ave. Pierre, SD 57501
 (605) 773-3222 perry.griffith@state.sd.us

NOTICE
 This form is for state owned rail lines only which include Napa-Platte, Yale, and Britton.

No crossing fee when located within public right of way

One-time crossing fee when not located within public right of way, for 1 track: \$750, to accompany application

APPLICANT INFORMATION

Nearest City, Town or Village	Name and address of applicant		Date
Distance to installation, measured along track from nearest milepost or known location, such as center line of a posted road, street or avenue			
Corporation In what state?	Telephone	Email	
Individual Under what name is business conducted?			
Partnership Names of all partners			

OVERHEAD POWER CROSSING DATA

Number of circuits	Initial	Voltage	Load current	Frequency	
Wire clearance over rails to lowest conductors or communication line	Anticipated future	Voltage	Load current	Frequency	
	Number	Material	Size		
Stringing sag	Inches	Temperature	Final unloaded sag	Inches	Temperature

OVERHEAD COMMUNICATION LINE AND CABLE CROSSING DATA

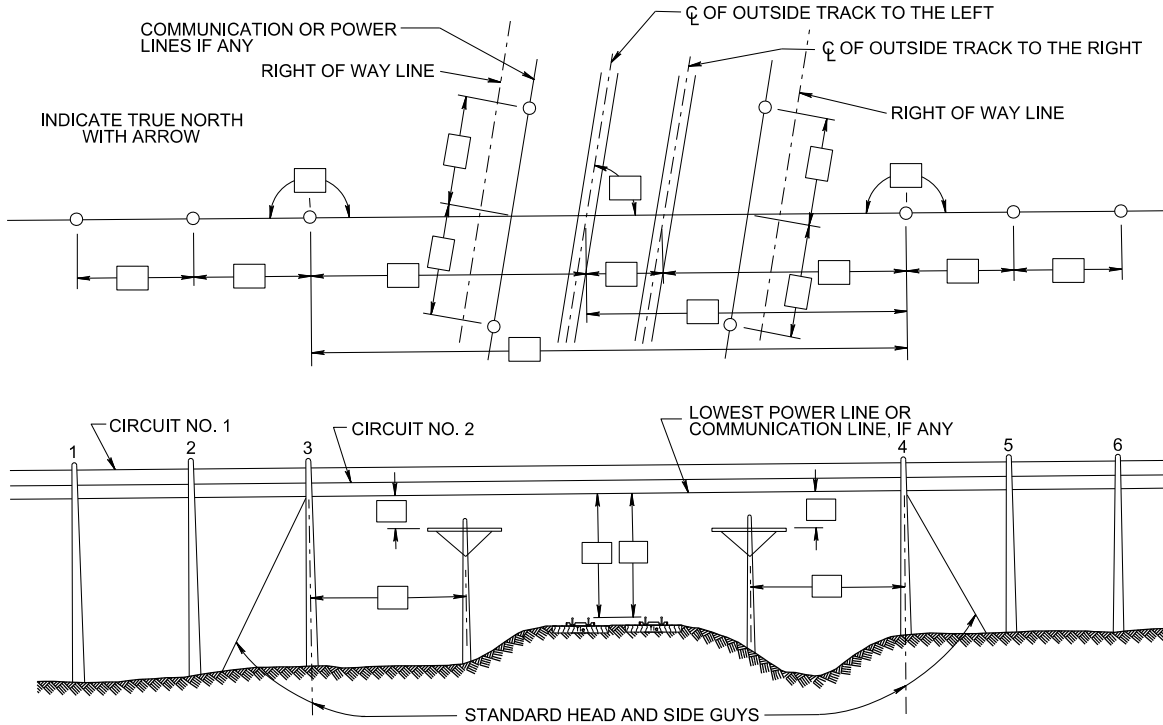
Wires:	Clearance over rail	Number of wires	Size	Material	
Stringing sag:	Inches	Temperature	Insulators:	Type	Material
Cable:	Sheath material	Number of pairs	Gauge	Outside diameter	Weight: pounds/feet
Cable suspension strand	Size	Material			
How is cable attached?	If by rings, spacing		Inches		

Applicant signature	By	Title	Date
---------------------	----	-------	------

Reviewer's remarks

S.D. Office of Railroads	Date
--------------------------	------

REQUIRED DATA FOR WIRE AND CABLE CROSSING
(SPECIAL PLANS REQUIRED FOR LONGITUDINAL OCCUPANCY)



ELEVATION FOR OVERHEAD CROSSING

POLE TOP CONSTRUCTION DATA

Size of arms	Material	Size and type of braces
Pin spacing	Size, type and material of pins	Type of arm separator
Grounding connection:	Material	Size
Aerial ground wire:	Material	Size

Poles	Length in feet	Circumference in inches		A.S.A. Classes	Depth of setting	Number of guys		
		Ground	Top			Toward Xing	From Xing	Size
No. 1								
No. 2								
No. 3								
No. 4								
No. 5								
No. 6								

Treatment of poles	Species of timber	Size of guy wire
Material of guy wire	Type of guy anchorage	

To email this form, please save a copy of this form to your computer and email using the "email" button from the saved copy. You may also print a copy and mail to the address located at the top of the form.